



cegeka

In close
cooperation

Corporate Presentation

Cegeka Romania





cegeka

Van dichtbij
meemaken



Benelux based ICT company



cegeka

In close
cooperation

Facts & Figures Cegeka Group*



€ 380 M
2015 forecast



7000
customers



Privately Held
+70% family owned



Top 200 Clients
account for 80% of revenue



3000+
employees

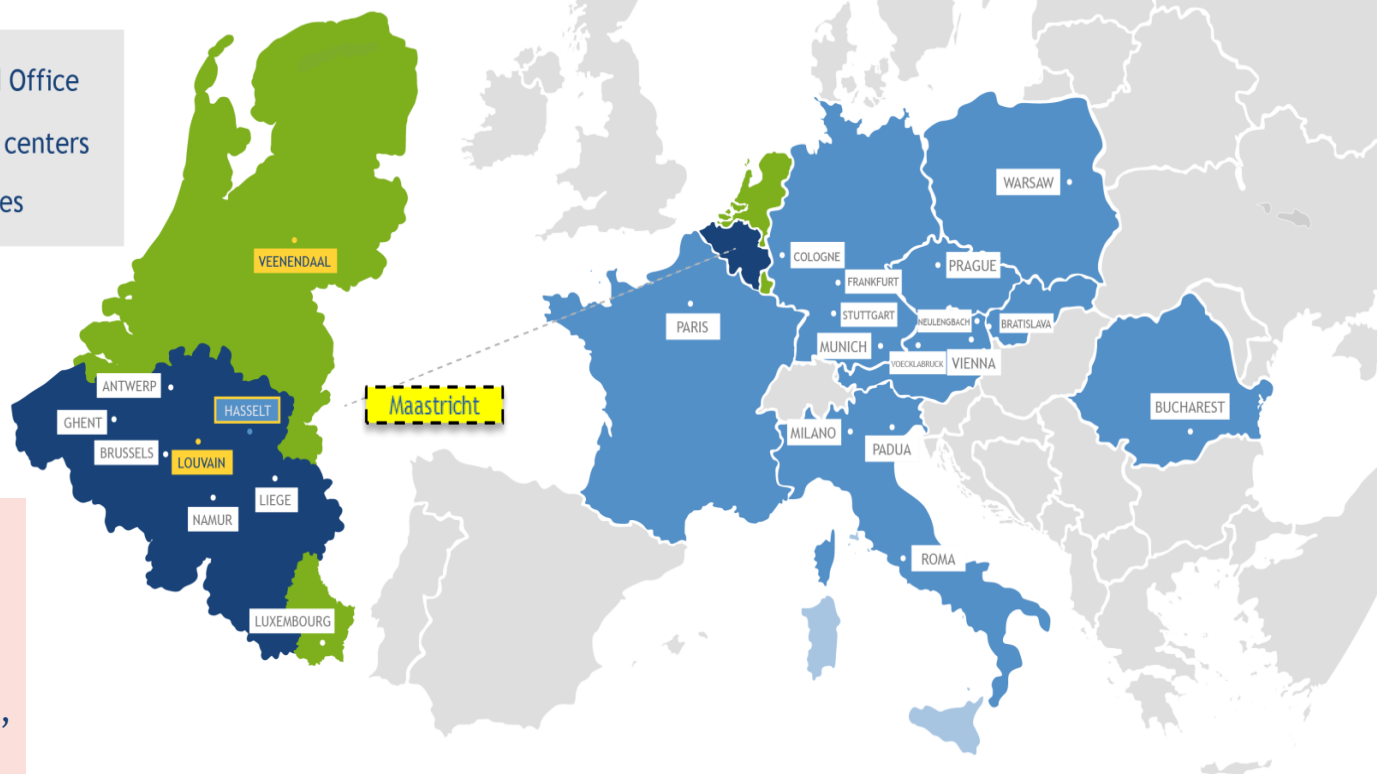
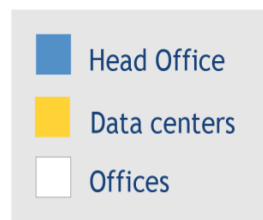
From 30 to 2000 in 20 years



cegeka

In close
cooperation

European ICT Integrator



69% of employees work in
Benelux · 76% of revenue
from Benelux

Operations in 11 countries:
Austria, Benelux, Czech Rep.,
France, Germany, Italy,
Poland, Romania*, Slovakia

*Group Shared Service for software development and 24/7 remote infrastructure services (NOC/Service Desk)



cegeka

In close
cooperation

Our Mission

To be **recognized** as an independent **high quality, boutique ICT** integrator that delivers true **business value**.

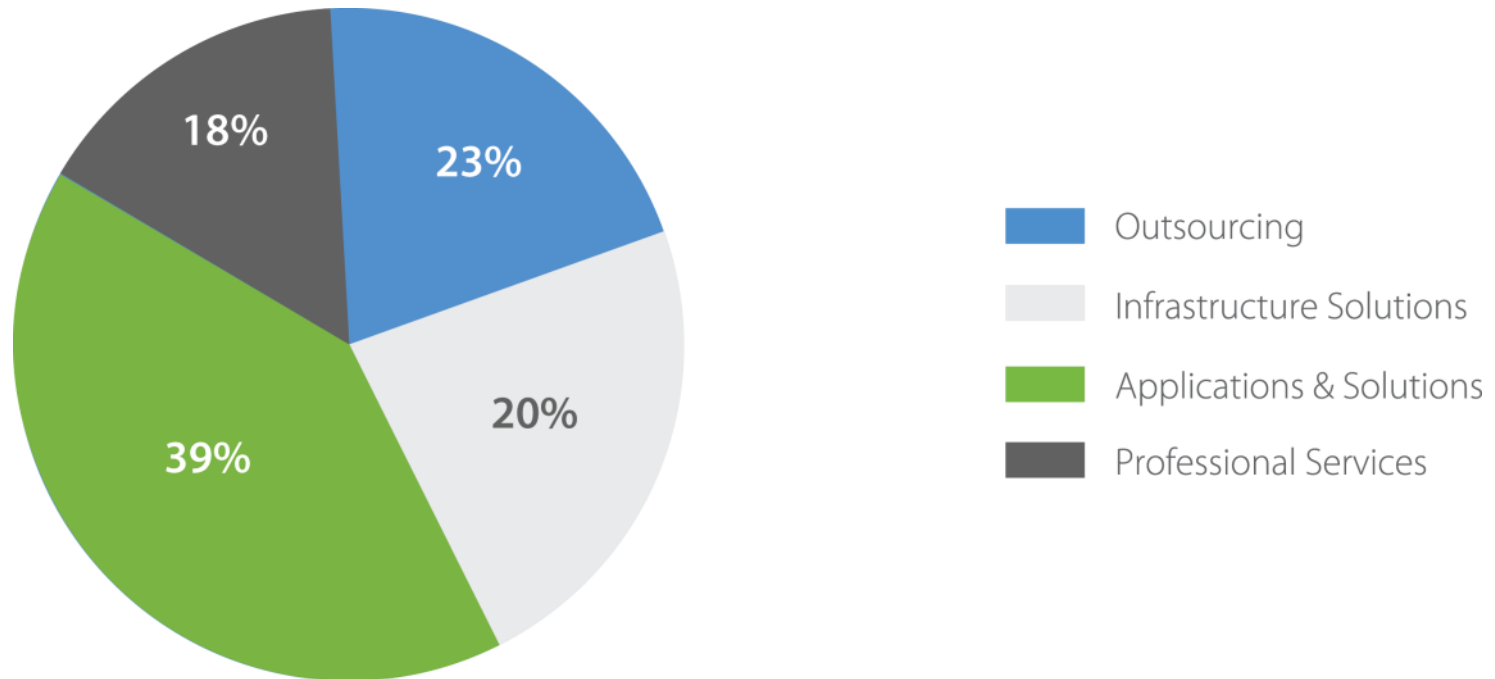
By **2020** we will be operating in at least **12 European countries**, realizing a turnover of more than **750 million Euro's** and achieve a **double digit EBIT** level that allows for continued **investment** in our **customers and employees**.



cegeka

In close
cooperation

Turnover per product group



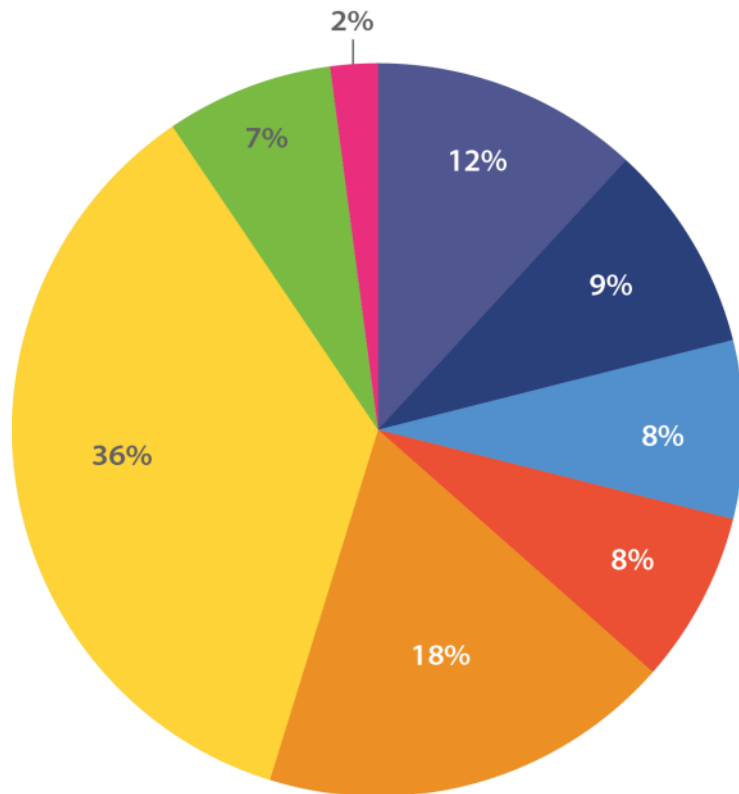
15% of the turnover comes from own software products (Cegeka IP)



cegeka

In close
cooperation

Turnover per sector



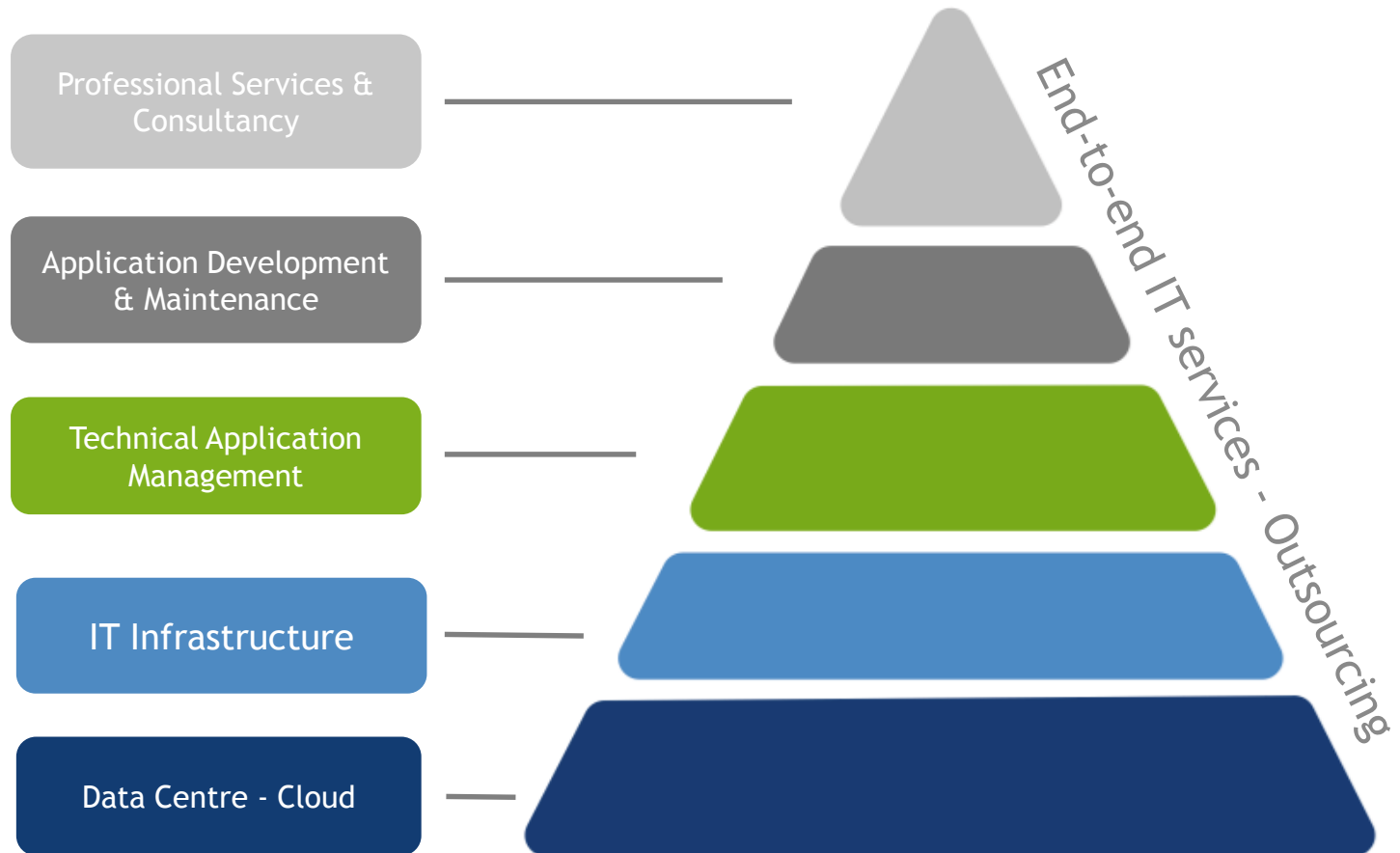
- Public sector
- Social Security
- Healthcare
- Housing
- Banking and Insurance
- Industry (other)
- Logistics
- Retail



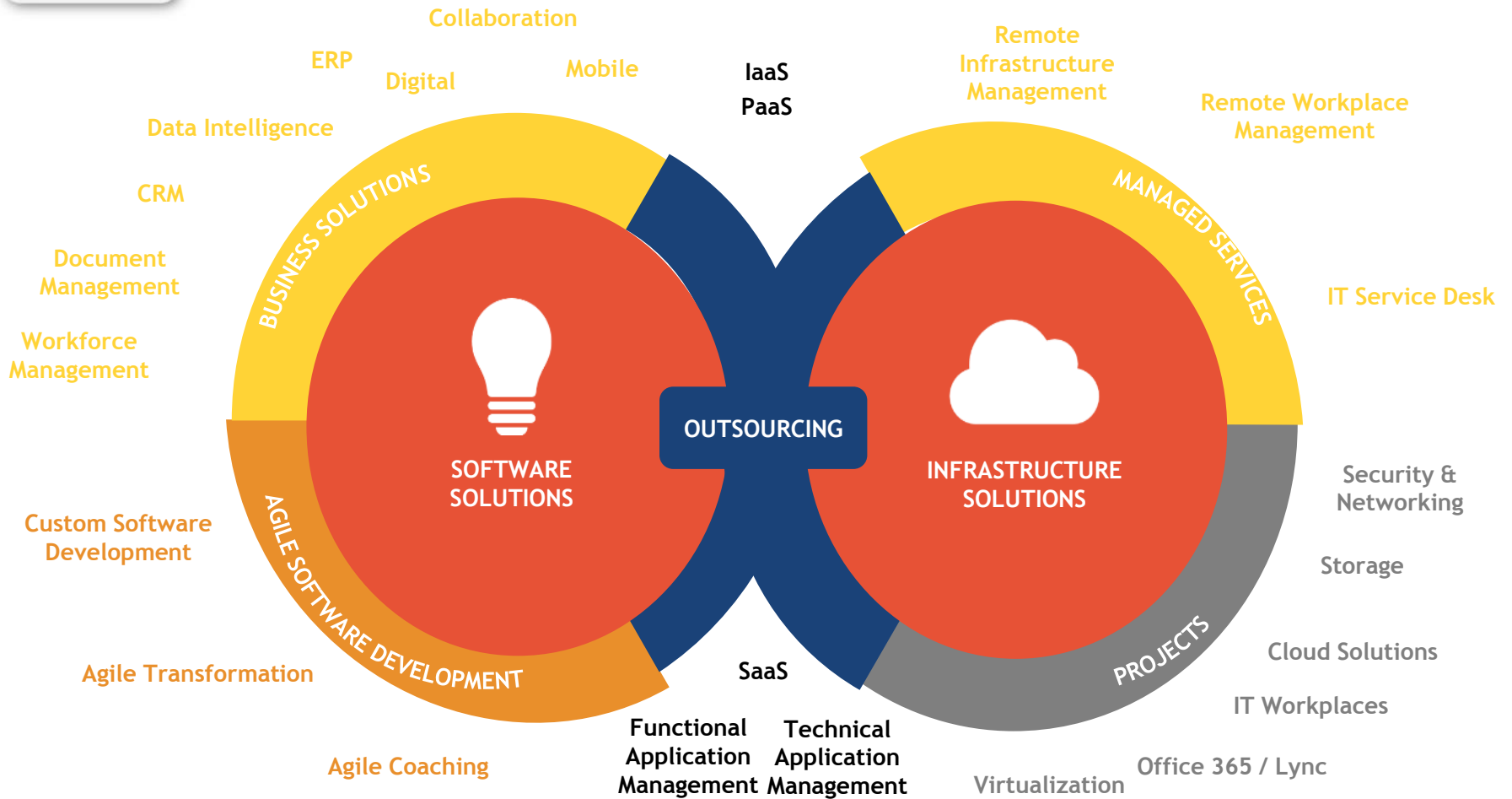
cegeka

In close
cooperation

From infrastructure to functional analysis



Solutions

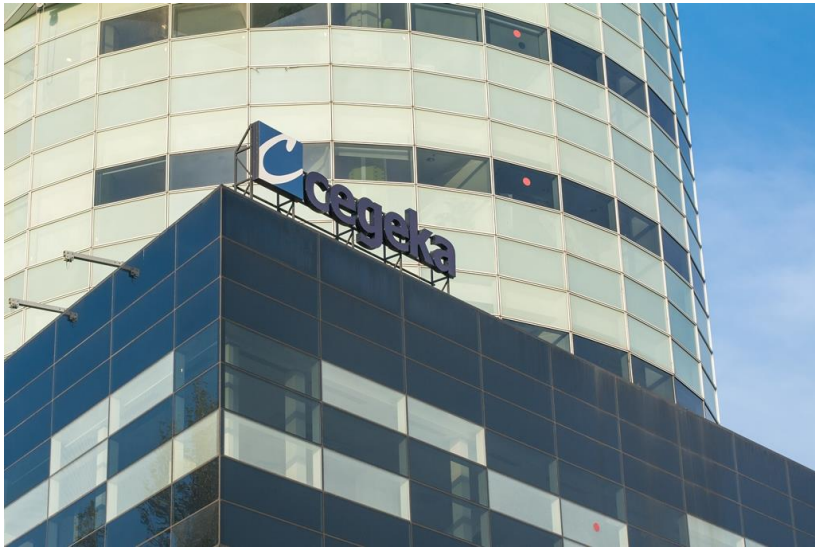


STAFFING

CONSULTING



In close
cooperation



Cegeka Romania



cegeka

In close
cooperation

Cegeka Romania - Overview

Current Headcount: 294

New Office - Iasi - December 2015

Estimated Headcount 2016: 460 FTEs

out of which : 50+ FTEs in IASI

2 Divisions:

- Java/.NET/Mobile Software Development
- 24/7 Remote Infrastructure Monitoring

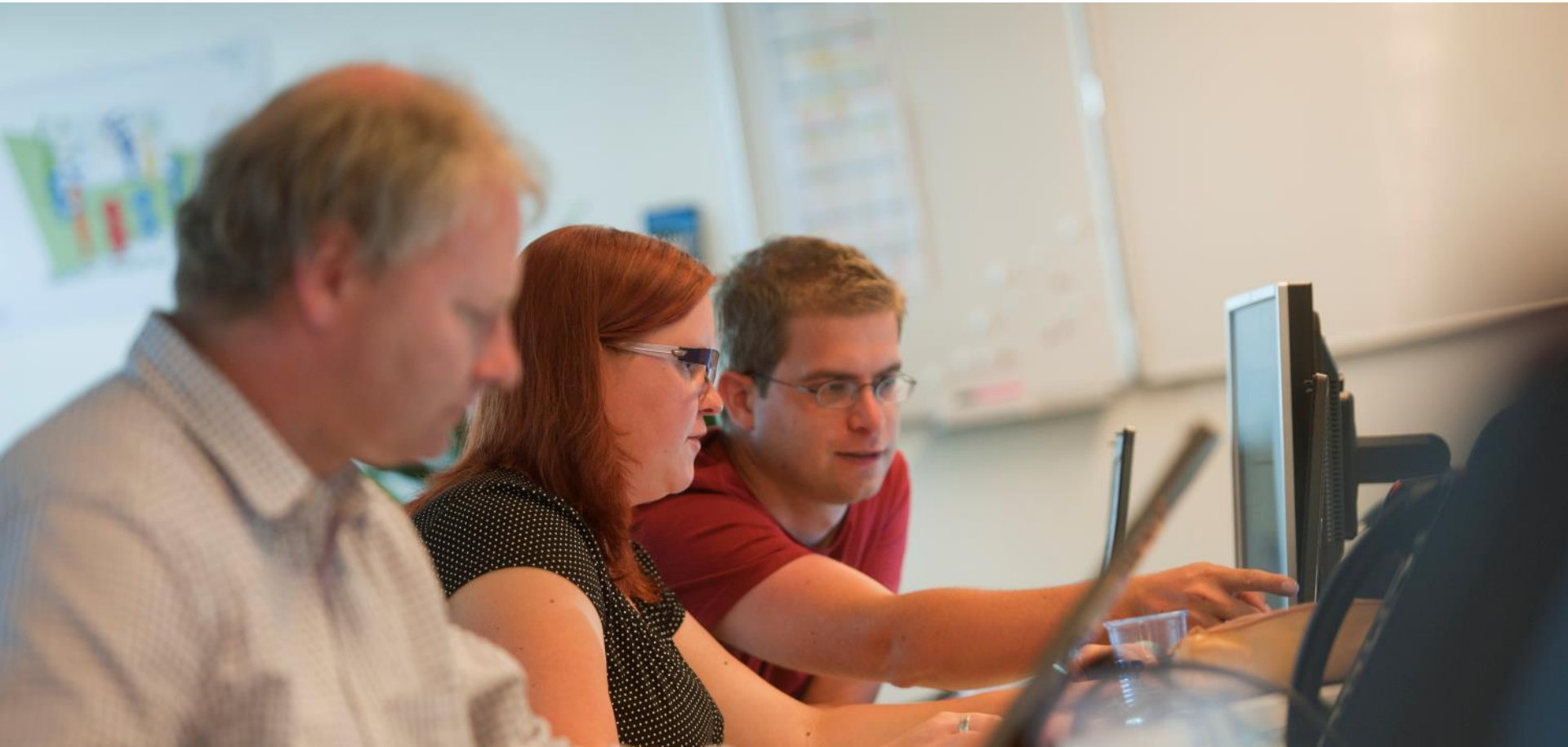




cegeka

In close
cooperation

References

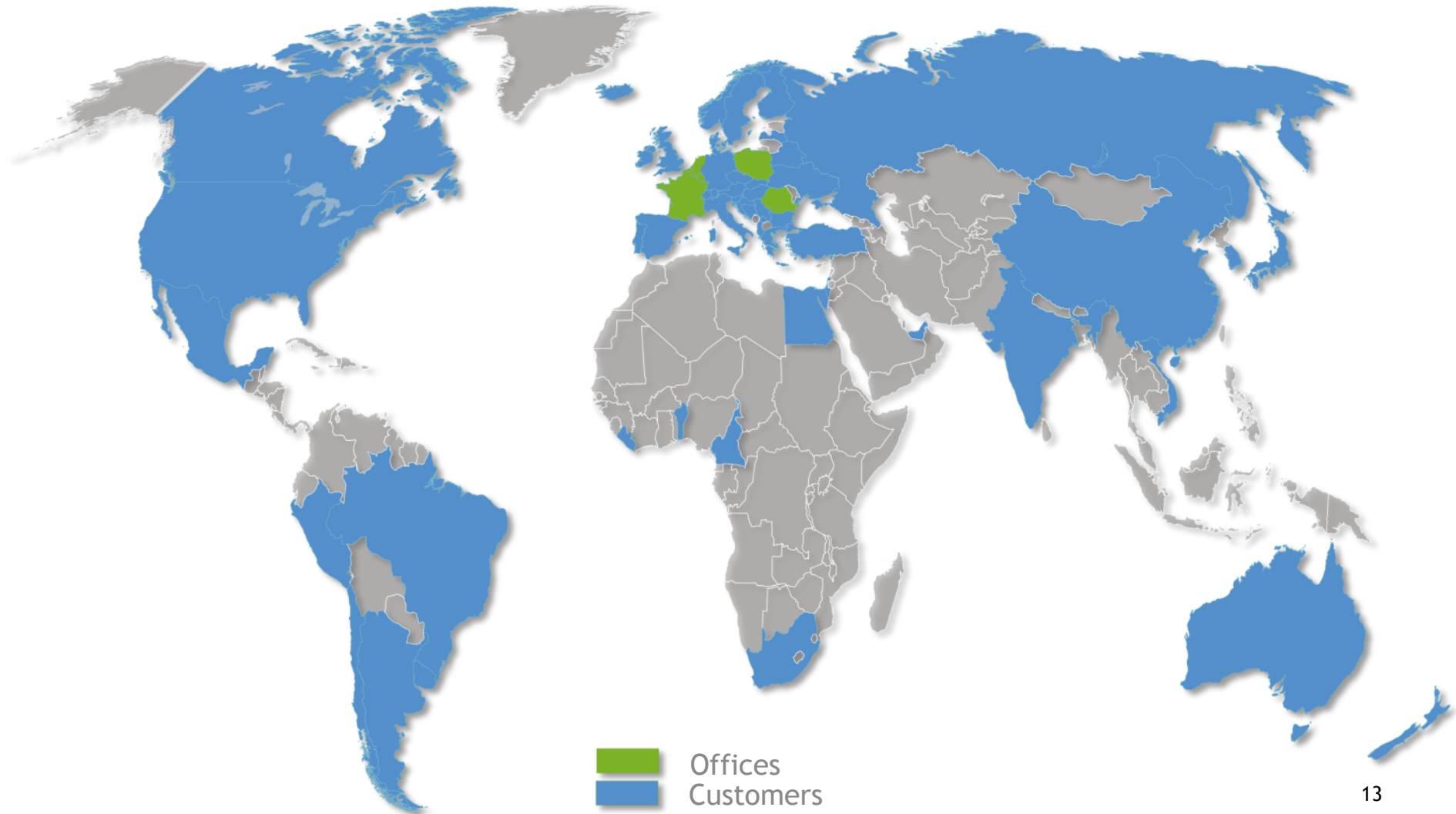




cegeka

In close
cooperation

Customers in 63 Countries





cegeka

In close
cooperation

Sector - Finance

Customer references



Baloise
Insurance

RBS
The Royal Bank of Scotland


Rabobank


vanbreda
INTERNATIONAL

 **ABN-AMRO**

 **Banque Nationale Bank**
DE BELGIQUE VAN BELGIË
Eurosystem

 **NIBC**
DIRECT


Landbouwkrediet
BANK & VERZEKERINGEN

 **ARGENTA**
uw appeltje voor de dorst

ethias
BANK


KBC

Bank van De Post
Bank & Verzekeringen 

delta lloyd
LIFE

ABK
BANK

callataÿ&wouters
BANKING SOLUTIONS

 **BNP PARIBAS**
FORTIS



cegeka

In close
cooperation

Sector - Retail

Customer references



BRISTOL

Bakeries
Belgium

AVEVE

Soezie
lekker
thuisbakken!

Shoe
Discount

auping

RENMANS

Q PARK

Agora

pralines
Leonida

bart smit

LEEN BAKKER!

TORFS
Schoenen met naam

Connections

avance
THE QUALITY SHOE STORE

Intermarché



cegeka

In close
cooperation

Sector - Healthcare

Customer references



JESSA
ZIEKENHUIS

UZ
Universitair Ziekenhuis Gent

UZA
kennis / ervaring / zorg

 **VIOLLIER**


aml


imelda
ZIEKENHUIS
WZC DEN OLM

Centre Hospitalier
de Wallonie picarde



az turnhout


Sint-Rembert
algemeen ziekenhuis


VieCuri
gewoon beter

fagg 

A Z
J P

AZ DAMIAAN
OOSTENDE 


zna


jvz
Jen Spierden Ziekenhuis

GZA 
GasthuisZusters Antwerpen



cegeka

In close
cooperation

Sector - Public Customer references





cegeka

In close
cooperation

Sector - Logistics

Customer references



samskip



MEDITERRANEAN SHIPPING COMPANY





cegeka

In close
cooperation

Sector - Industry Customer references





cegeka

In close
cooperation

Sector - Social Customer references





cegeka

In close
cooperation

Selected Vendor Partnerships



Cegeka has partnership with most infrastructure technology vendors to
for reselling purposes and to facilitate our support services



cegeka

Van dichtbij
meemaken

CONNECT

Lucian BUTNARU

General Manager
Cegeka Romania

mobile: +40 741 27 79 79

skype: lucianbutnaru

lucian.butnaru@cegeka.com

www.cegeka.com

www.europeanappfactory.com